

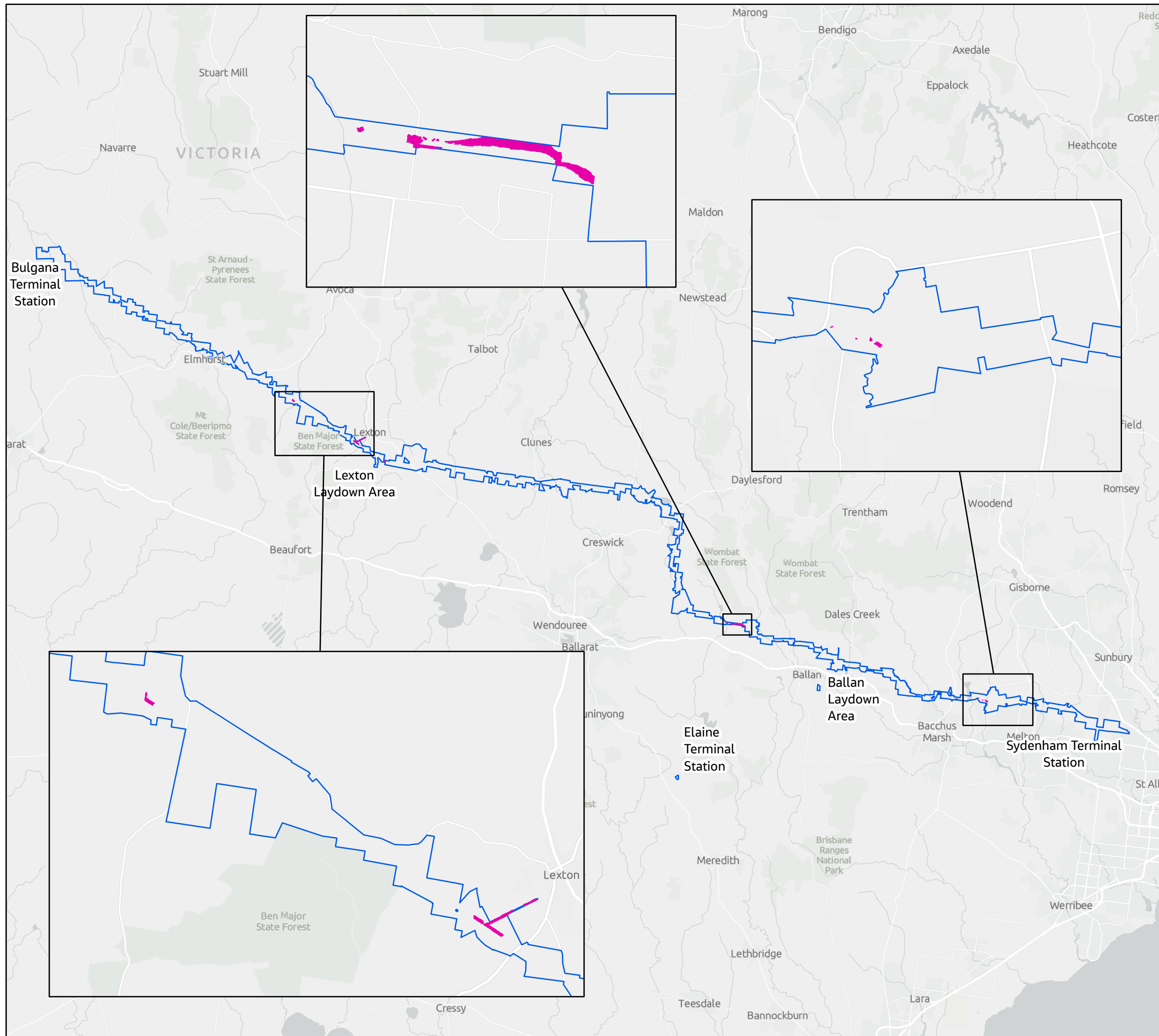
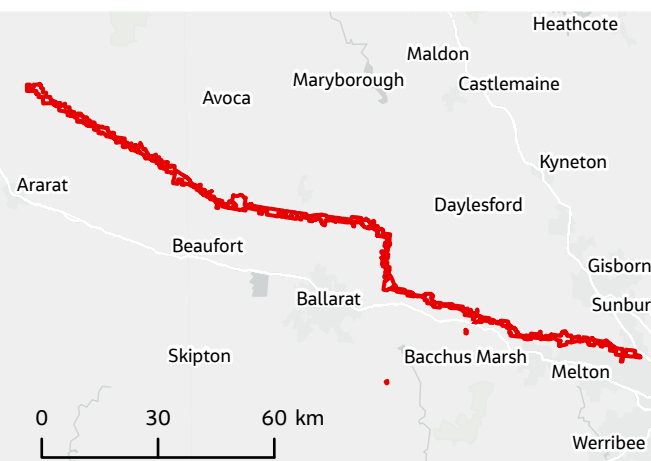
A.4 Impact to threatened fauna habitat (field mapped and modelled)

Appendix A.4
Impact to threatened fauna habitat
Barking Owl
Western Renewables Link

- Project Land
- Impacted Barking Owl field mapped potential habitat

WRL_WR1454_Biodiversity_ImpactstoTSH_Fauna_combined_A3
Created 24 June 2025 by KarimiH
IS311802
0 10 20
Kilometres
N
GDA2020 Vicgrid

DATA SOURCES
Jacobs, Sources: Esri, TomTom, Garmin, FAO, NOAA, USGS, © OpenStreetMap contributors, and the GIS User Community
COPYRIGHT: The concepts and information contained in this document are the copyright of Jacobs. Use or copying of the document in whole or in part without the written permission of Jacobs constitutes an infringement of copyright. Jacobs does not warrant that this document is definitive nor free of error and does not accept liability for any loss caused or arising from reliance upon information provided herein.



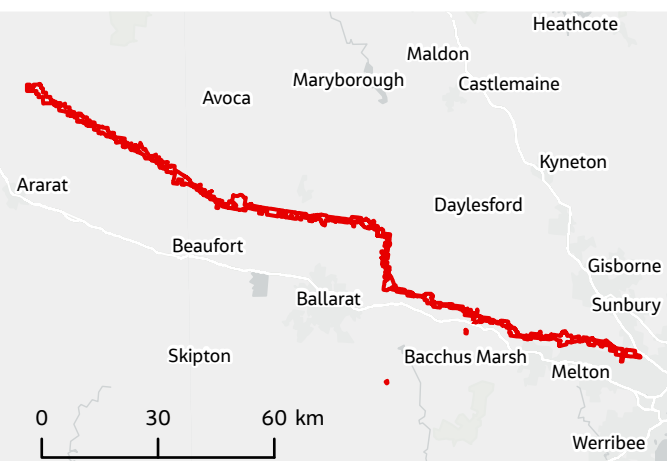
Appendix A.4
Impact to threatened fauna habitat
Blue-winged Parrot
Western Renewables Link

-  Project Land
- Impacted Blue-winged Parrot modelled habitat**
 -  Potential breeding habitat
 -  Potential foraging habitat



WRL_WR1454_Biodiversity_ImpactstoTSH_Fauna_combined_A3
Created 24 June 2025 by KarimiH
IS311802
0 10 20
Kilometres
N
GDA2020 Vicgrid

DATA SOURCES
Jacobs, Sources: Esri, TomTom, Garmin, FAO, NOAA, USGS, © OpenStreetMap contributors, and the GIS User Community

COPYRIGHT: The concepts and information contained in this document are the copyright of Jacobs. Use or copying of the document in whole or in part without the written permission of Jacobs constitutes an infringement of copyright. Jacobs does not warrant that this document is definitive nor free of error and does not accept liability for any loss caused or arising from reliance upon information provided herein.



Appendix A.4
Impact to threatened fauna habitat
Brown Toadlet
Western Renewables Link

-  Project Land
-  Impacted Brown Toadlet Confirmed habitat



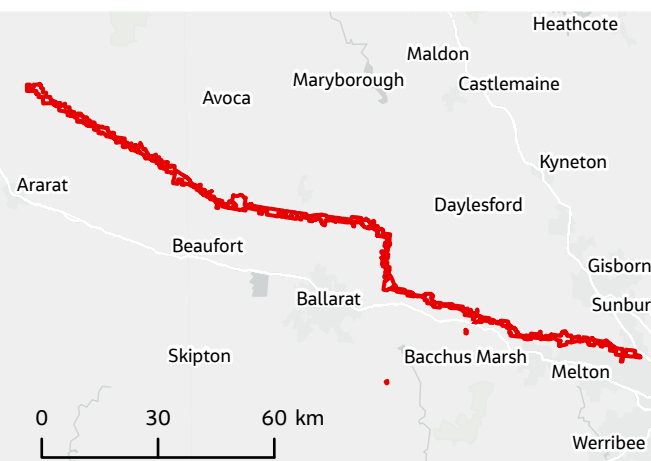
WRL_WR1454_Biodiversity_ImpactstoTSH_Fauna_combined_A3
Created 24 June 2025 by KarimiH

0 10 20
Kilometres



IS311802
N
GDA2020 Vicgrid

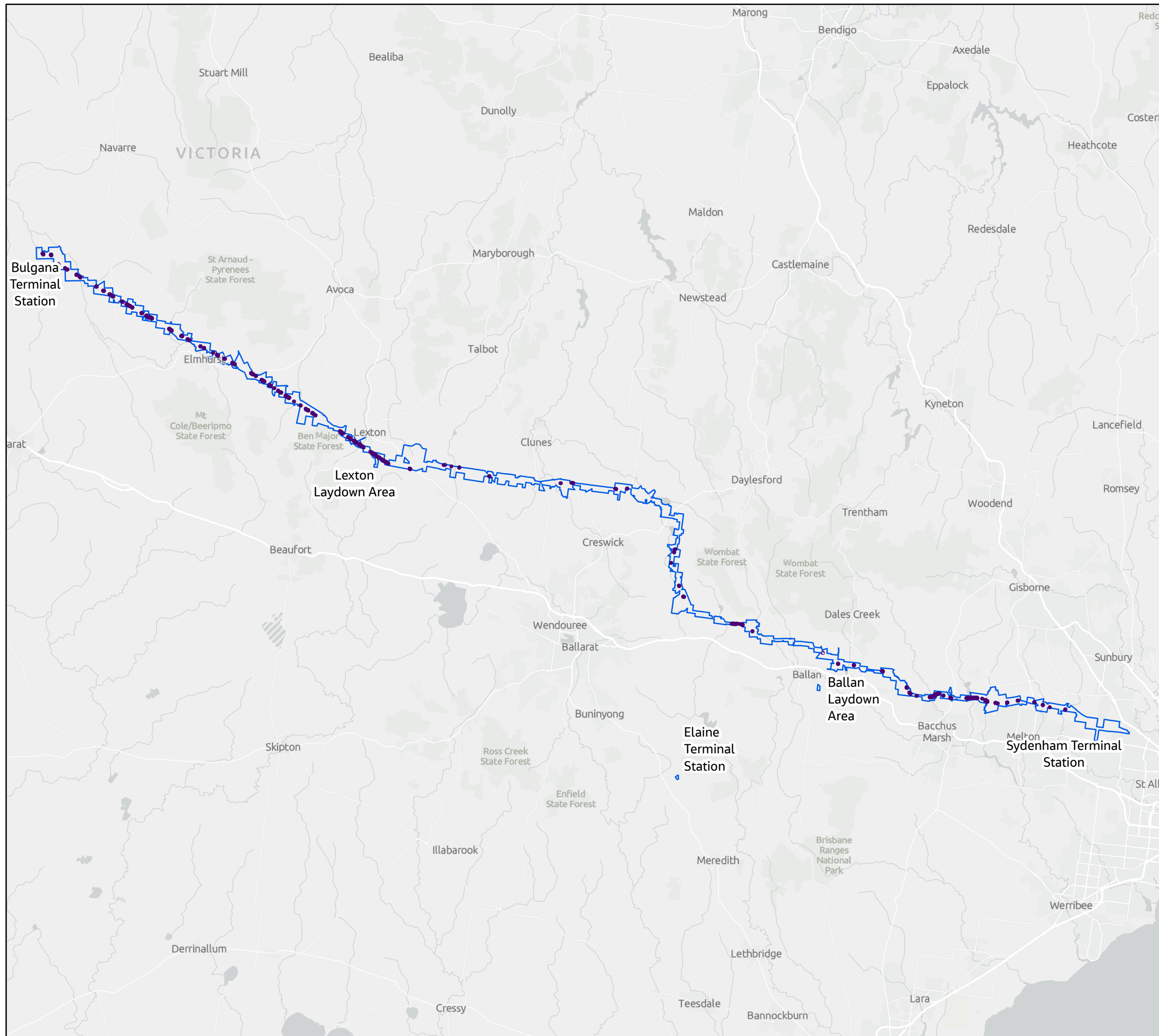
DATA SOURCES
Jacobs, Sources: Esri, TomTom, Garmin, FAO, NOAA, USGS, © OpenStreetMap contributors, and the GIS User Community

COPYRIGHT: The concepts and information contained in this document are the copyright of Jacobs. Use or copying of the document in whole or in part without the written permission of Jacobs constitutes an infringement of copyright. Jacobs does not warrant that this document is definitive nor free of error and does not accept liability for any loss caused or arising from reliance upon information provided herein.

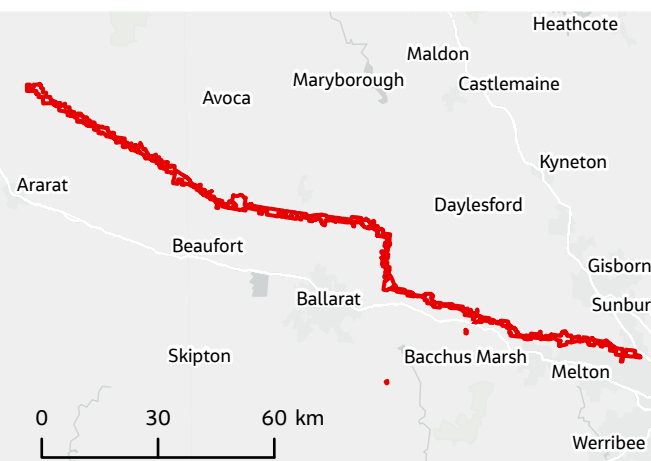


Appendix A.4
Impact to threatened fauna habitat
Brown Treecreeper
Western Renewables Link




-  Project Land
-  Impacted Brown Treecreeper modelled potential key habitat



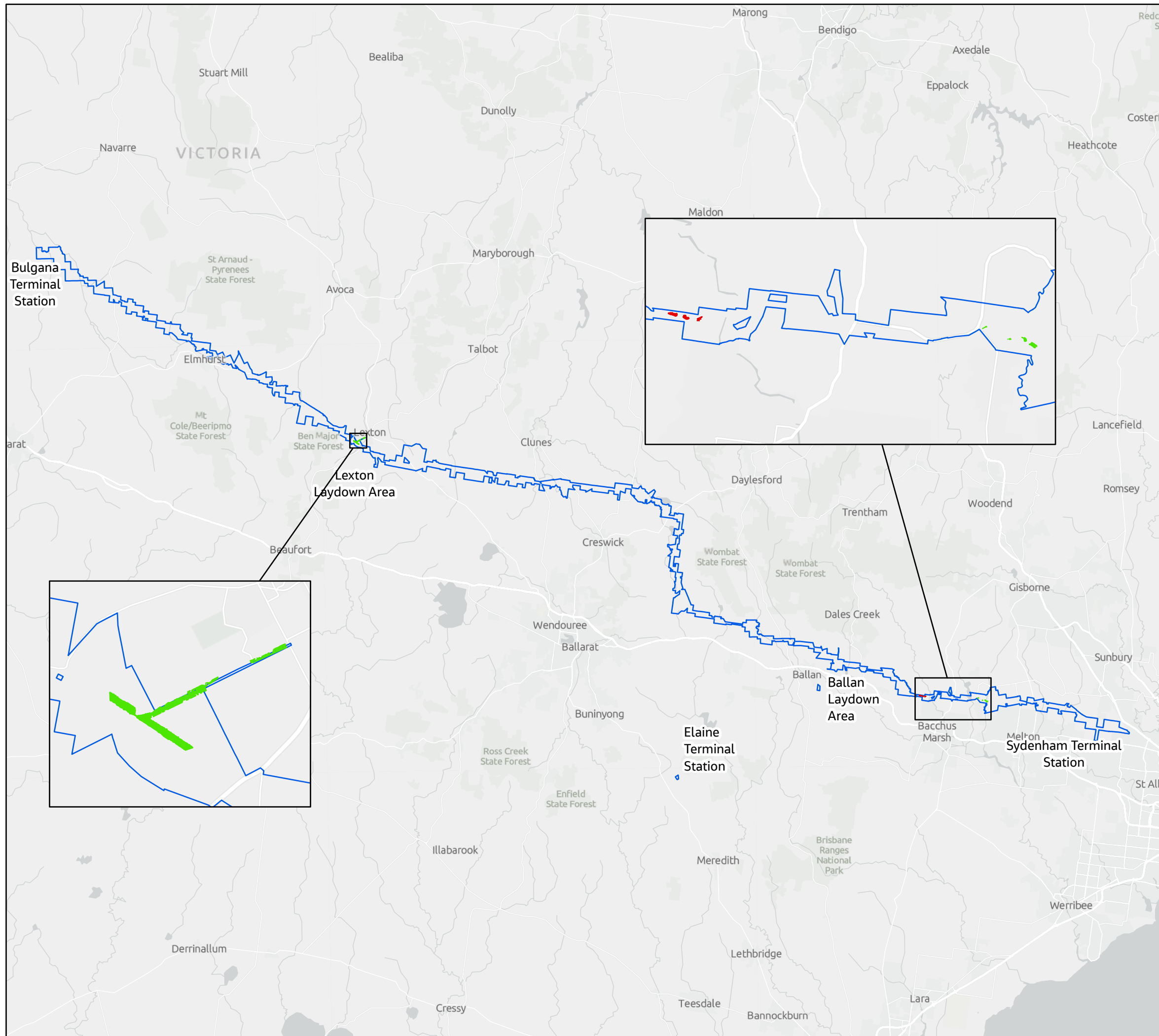
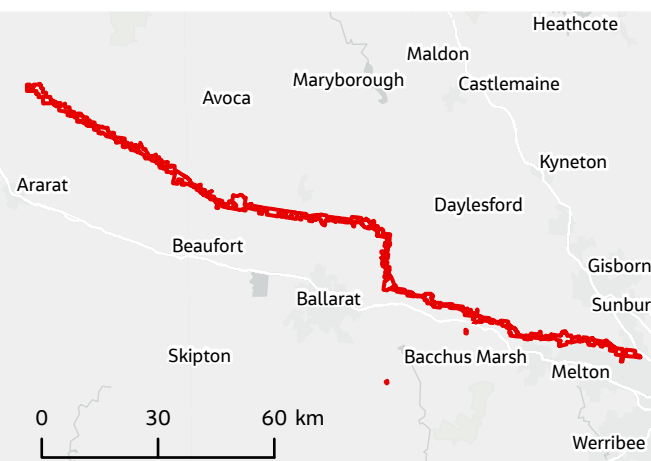
WRL_WR1454_Biodiversity_ImpactstoTSH_Fauna_combined_A3
Created 24 June 2025 by KarimiH
IS311802
0 10 20
Kilometres
N
GDA2020 Vicgrid
DATA SOURCES
Jacobs, Sources: Esri, TomTom, Garmin, FAO, NOAA, USGS, © OpenStreetMap contributors, and the GIS User Community
COPYRIGHT: The concepts and information contained in this document are the copyright of Jacobs. Use or copying of the document in whole or in part without the written permission of Jacobs constitutes an infringement of copyright. Jacobs does not warrant that this document is definitive nor free of error and does not accept liability for any loss caused or arising from reliance upon information provided herein.





Appendix A.4
Impact to threatened fauna habitat
Brush-tailed Phascogale
Western Renewables Link

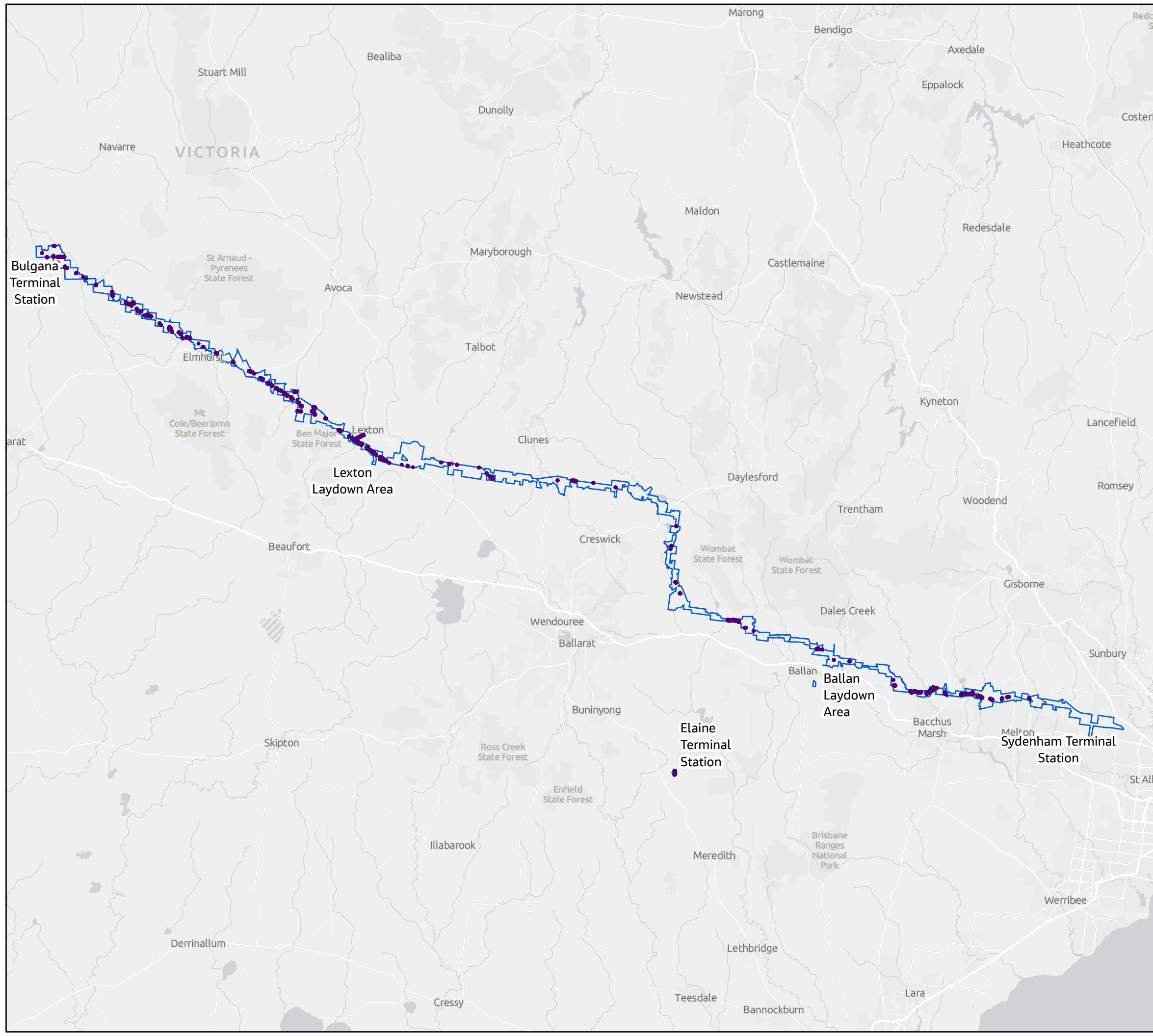
-  Project Land
- Impacted Brush-tailed Phascogale habitat**
 -  Confirmed habitat
 -  Desktop mapped potential habitat

WRL_WR1454_Biodiversity_ImpactstoTSH_Fauna_combined_A3
Created 24 June 2025 by KarimiH
IS311802
0 10 20
Kilometres
N
GDA2020 Vicgrid
DATA SOURCES
Jacobs, Sources: Esri, TomTom, Garmin, FAO, NOAA, USGS, © OpenStreetMap contributors, and the GIS User Community
COPYRIGHT: The concepts and information contained in this document are the copyright of Jacobs. Use or copying of the document in whole or in part without the written permission of Jacobs constitutes an infringement of copyright. Jacobs does not warrant that this document is definitive nor free of error and does not accept liability for any loss caused or arising from reliance upon information provided herein.

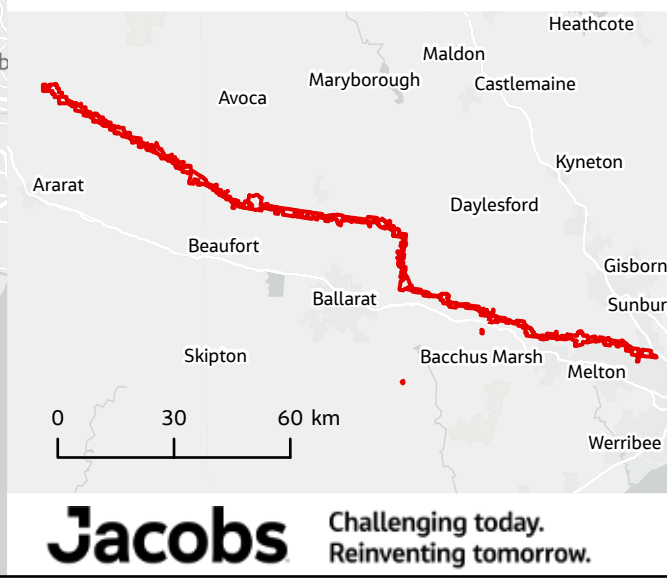


Appendix A.4
Impact to threatened fauna habitat
Diamond Firetail
Western Renewables Link

-  Project Land
-  Impacted Diamond Firetail modelled potential key habitat



WRL_WR1454_Biodiversity_ImpactstoTSH_Fauna_combined_A3
Created 24 June 2025 by KarimiH
IS311802
0 10 20
Kilometres
N
GDA2020 Vicgrid
DATA SOURCES
Jacobs, Sources: Esri, TomTom, Garmin, FAO, NOAA, USGS, © OpenStreetMap contributors, and the GIS User Community
COPYRIGHT: The concepts and information contained in this document are the copyright of Jacobs. Use or copying of the document in whole or in part without the written permission of Jacobs constitutes an infringement of copyright. Jacobs does not warrant that this document is definitive nor free of error and does not accept liability for any loss caused or arising from reliance upon information provided herein.



Appendix A.4

Impact to threatened fauna habitat

Fat-tailed Dunnart

Western Renewables Link

- Project Land
- Impacted Fat-tailed Dunnart field mapped potential habitat

WRL_WR1454_Biodiversity_ImpactstoTSH_Fauna_combined_A3

Created 24 June 2025 by KarimiH

IS311802

0 10 20

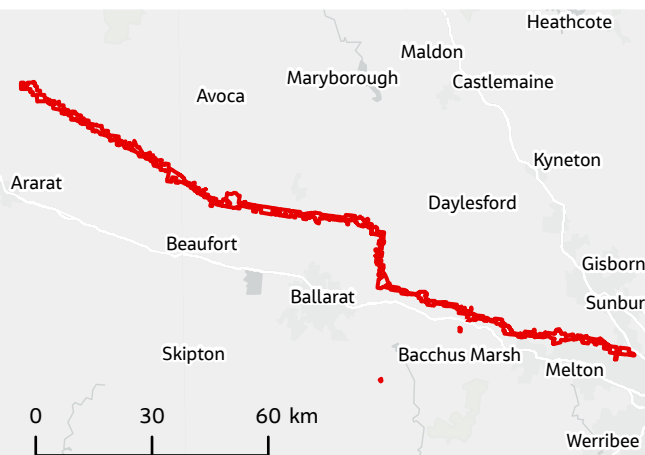
Kilometres

N

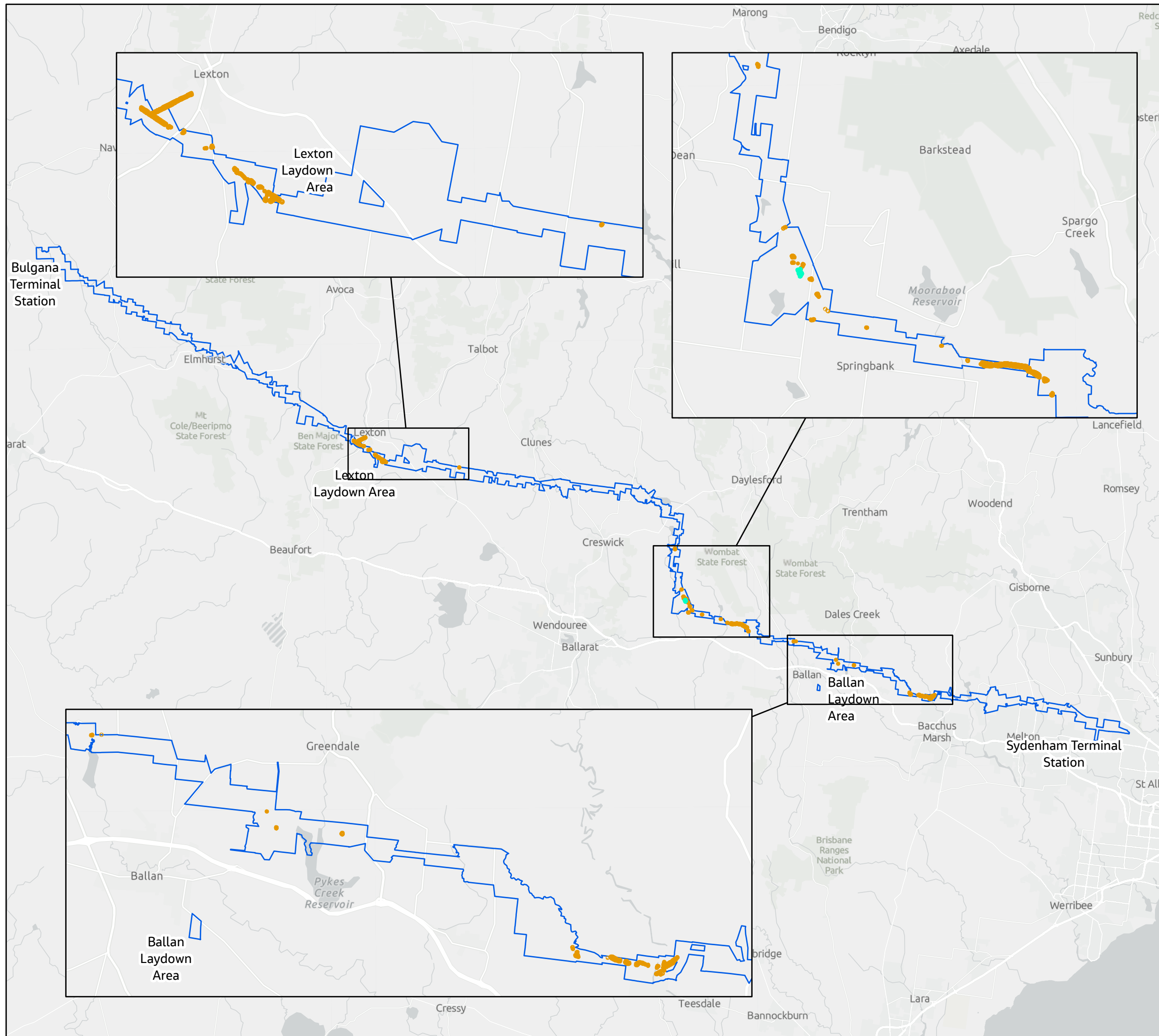
GDA2020 Vicgrid

DATA SOURCES
Jacobs, Sources: Esri, TomTom, Garmin, FAO, NOAA, USGS, © OpenStreetMap contributors, and the GIS User Community

COPYRIGHT: The concepts and information contained in this document are the copyright of Jacobs. Use or copying of the document in whole or in part without the written permission of Jacobs constitutes an infringement of copyright. Jacobs does not warrant that this document is definitive nor free of error and does not accept liability for any loss caused or arising from reliance upon information provided herein.



Appendix A.4
Impact to threatened fauna habitat
Gang-gang Cockatoo
Western Renewables Link

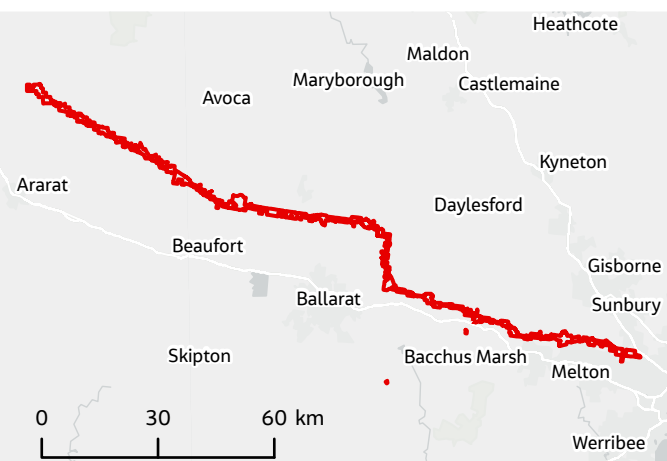


- Project Land
- Impacted Gang-gang Cockatoo modelled habitat**
- Potential breeding habitat
 - Potential foraging habitat

WRL_WR1454_Biodiversity_ImpactstoTSH_Fauna_combined_A3
Created 24 June 2025 by KarimiH
IS311802
0 10 20
Kilometres
N
GDA2020 Vicgrid

DATA SOURCES
Jacobs, Sources: Esri, TomTom, Garmin, FAO, NOAA, USGS, © OpenStreetMap contributors, and the GIS User Community

COPYRIGHT: The concepts and information contained in this document are the copyright of Jacobs. Use or copying of the document in whole or in part without the written permission of Jacobs constitutes an infringement of copyright. Jacobs does not warrant that this document is definitive nor free of error and does not accept liability for any loss caused or arising from reliance upon information provided herein.



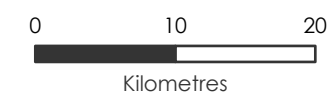
Appendix A.4
Impact to threatened fauna habitat
Golden Sun Moth
Western Renewables Link

- Project Land
- Impacted Golden Sun Moth habitat**
- Confirmed habitat
 - Field mapped potential habitat

WRL_WR1454_Biodiversity_ImpactstoTSH_Fauna_combined_A3

Created 24 June 2025 by KarimiH

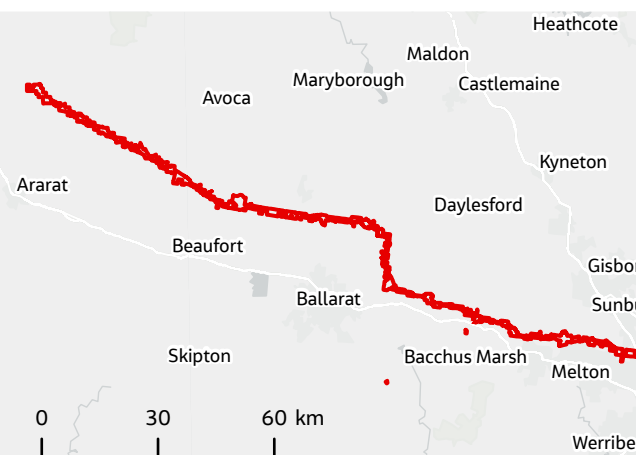
IS311802






GDA2020 Vicgrid

DATA SOURCES
Jacobs, Sources: Esri, TomTom, Garmin, FAO, NOAA, USGS, © OpenStreetMap contributors, and the GIS User Community

COPYRIGHT: The concepts and information contained in this document are the copyright of Jacobs. Use or copying of the document in whole or in part without the written permission of Jacobs constitutes an infringement of copyright. Jacobs does not warrant that this document is definitive nor free of error and does not accept liability for any loss caused or arising from reliance upon information provided herein.



Appendix A.4
Impact to threatened fauna habitat
Grassland Earless Dragon
Western Renewables Link

-  Project Land
-  Impacted Victorian Grassland
-  Earless Dragon field-mapped potential habitat

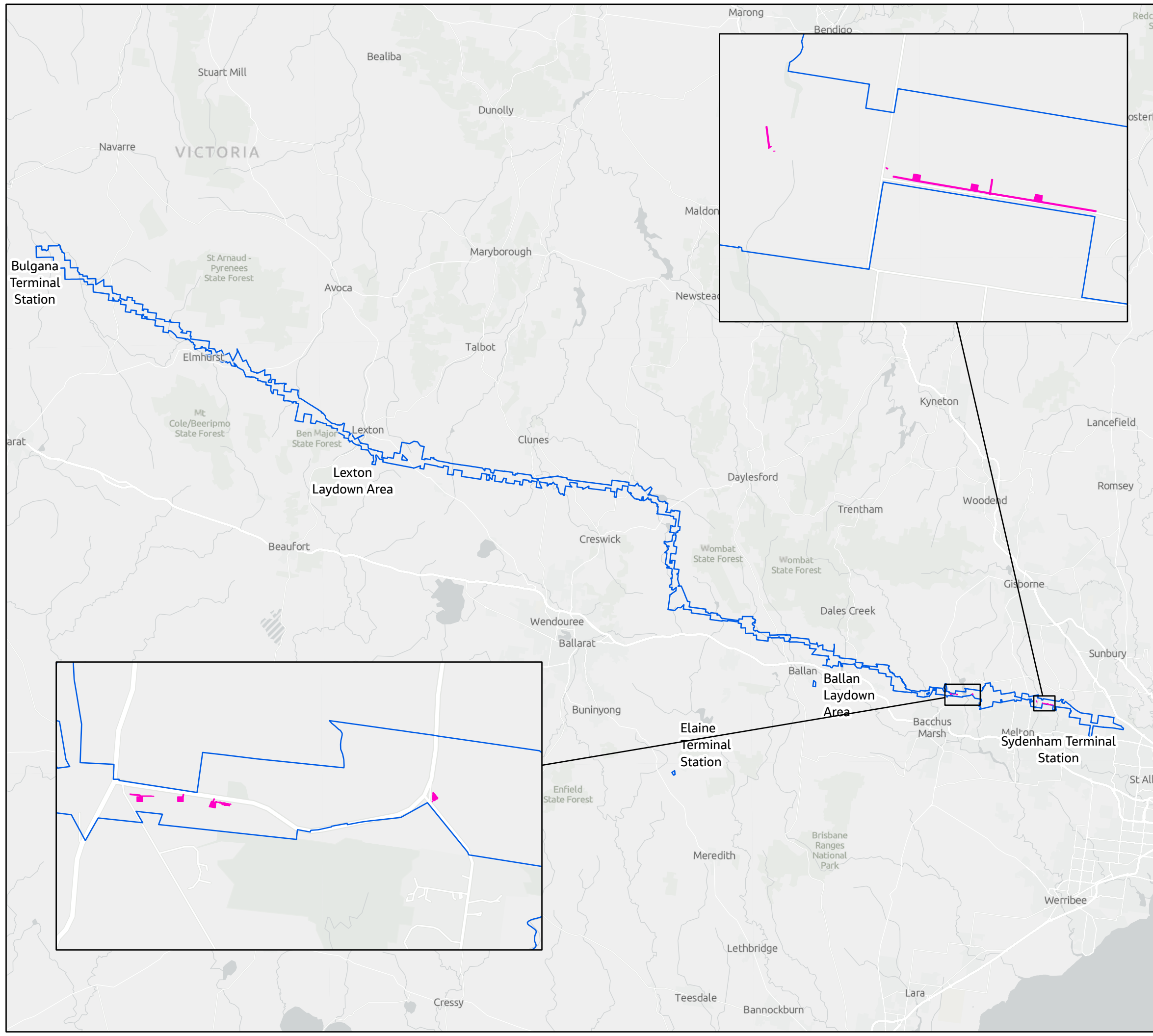
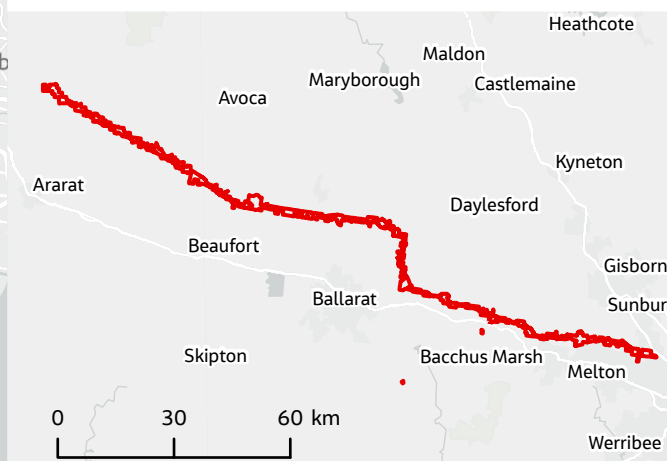
WRL_WR1454_Biodiversity_ImpactstoTSH_Fauna_combined_A3
Created 24 June 2025 by KarimiH



GDA2020 Vicgrid

DATA SOURCES
Jacobs, Sources: Esri, TomTom, Garmin, FAO, NOAA, USGS, © OpenStreetMap contributors, and the GIS User Community

COPYRIGHT: The concepts and information contained in this document are the copyright of Jacobs. Use or copying of the document in whole or in part without the written permission of Jacobs constitutes an infringement of copyright. Jacobs does not warrant that this document is definitive nor free of error and does not accept liability for any loss caused or arising from reliance upon information provided herein.



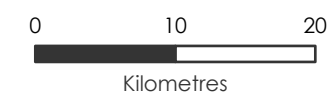
Appendix A.4
Impact to threatened fauna habitat
Grey-headed Flying-fox
Western Renewables Link

- Project Land
- Impacted Grey-headed Flying-fox modelled potential foraging habitat

WRL_WR1454_Biodiversity_ImpactstoTSH_Fauna_combined_A3

Created 24 June 2025 by KarimiH

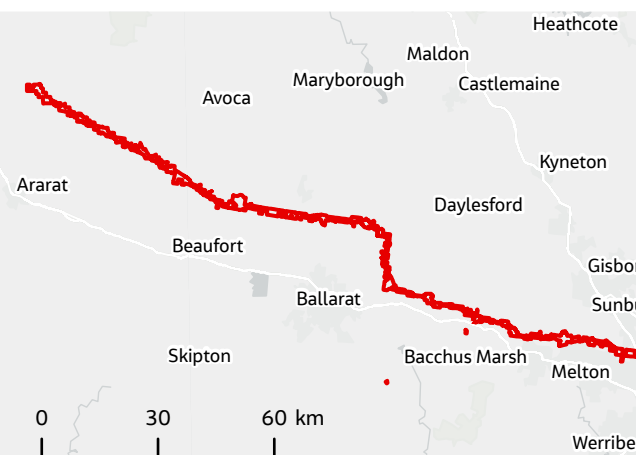
IS311802



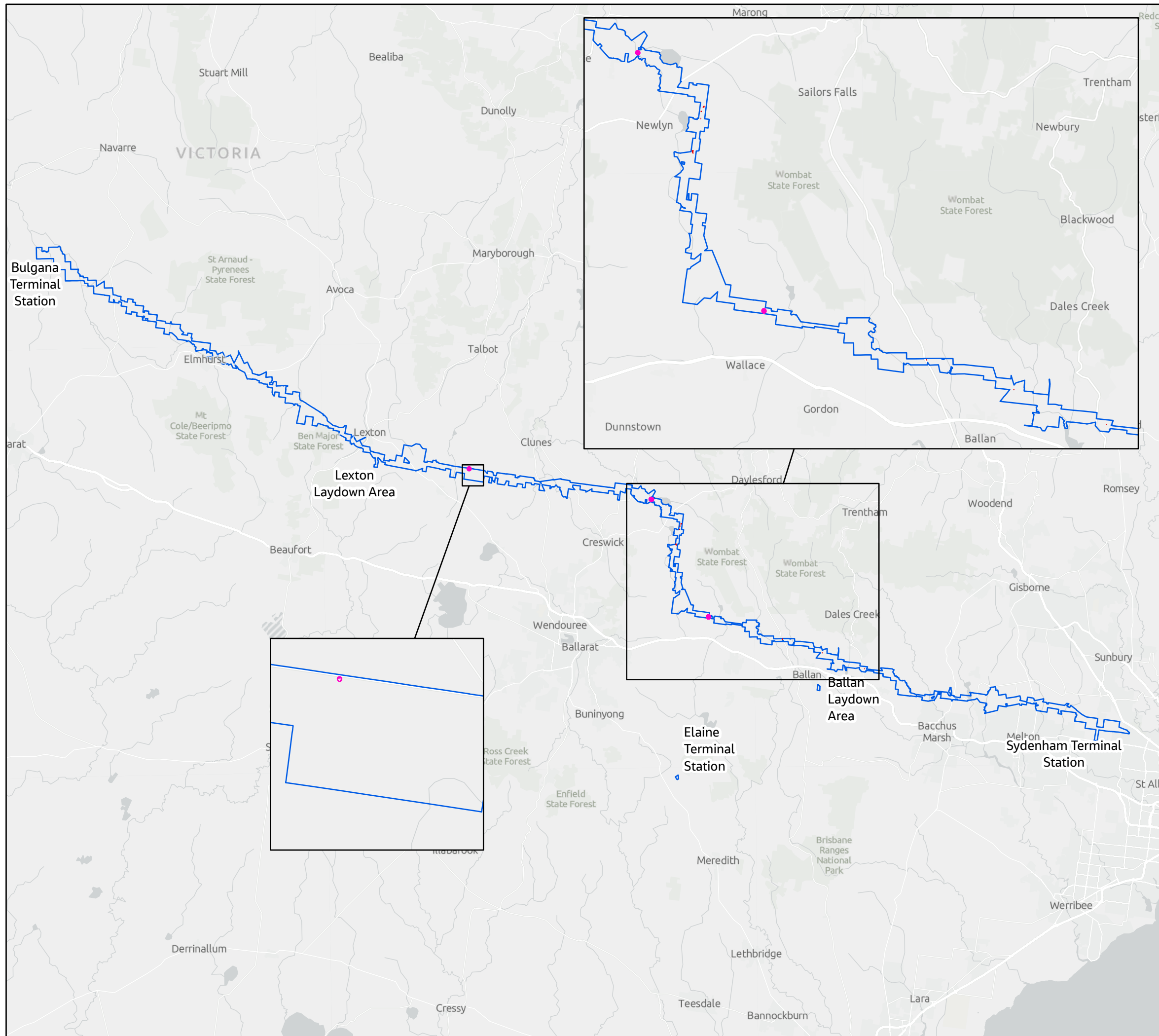
GDA2020 Vicgrid

DATA SOURCES
Jacobs, Sources: Esri, TomTom, Garmin, FAO, NOAA, USGS, © OpenStreetMap contributors, and the GIS User Community

COPYRIGHT: The concepts and information contained in this document are the copyright of Jacobs. Use or copying of the document in whole or in part without the written permission of Jacobs constitutes an infringement of copyright. Jacobs does not warrant that this document is definitive nor free of error and does not accept liability for any loss caused or arising from reliance upon information provided herein.



Appendix A.4
Impact to threatened fauna habitat
Growling Grass Frog
Western Renewables Link

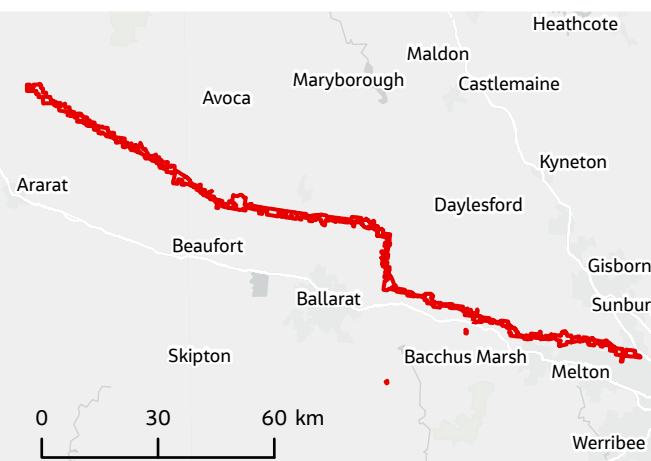


- Project Land
- Impacted Growling Grass Frog habitat**
 - Field mapped potential habitat
 - Desktop mapped potential habitat

WRL_WR1454_Biodiversity_ImpactstoTSH_Fauna_combined_A3
Created 24 June 2025 by KarimiH
IS311802
0 10 20
Kilometres
N
GDA2020 Vicgrid

DATA SOURCES
Jacobs, Sources: Esri, TomTom, Garmin, FAO, NOAA, USGS, © OpenStreetMap contributors, and the GIS User Community

COPYRIGHT: The concepts and information contained in this document are the copyright of Jacobs. Use or copying of the document in whole or in part without the written permission of Jacobs constitutes an infringement of copyright. Jacobs does not warrant that this document is definitive nor free of error and does not accept liability for any loss caused or arising from reliance upon information provided herein.



Appendix A.4
Impact to threatened fauna habitat
Hooded Robin
Western Renewables Link

Project Land
Impacted Hooded Robin
modelled potential key habitat

WRL_WR1454_Biodiversity_ImpactstoTSH_Fauna_combined_A3

Created 24 June 2025 by KarimiH

IS311802

0 10 20
Kilometres



GDA2020 Vicgrid

DATA SOURCES
Jacobs, Sources: Esri, TomTom, Garmin, FAO, NOAA, USGS, © OpenStreetMap contributors, and the GIS User Community

COPYRIGHT: The concepts and information contained in this document are the copyright of Jacobs. Use or copying of the document in whole or in part without the written permission of Jacobs constitutes an infringement of copyright. Jacobs does not warrant that this document is definitive nor free of error and does not accept liability for any loss caused or arising from reliance upon information provided herein.



Jacobs Challenging today.
Reinventing tomorrow.

Appendix A.4

Impact to threatened fauna habitat

Masked Owl

Western Renewables Link

- Project Land
- Impacted Masked Owl field mapped potential habitat

WRL_WR1454_Biodiversity_ImpactstoTSH_Fauna_combined_A3

Created 24 June 2025 by KarimiH

IS311802

0 10 20

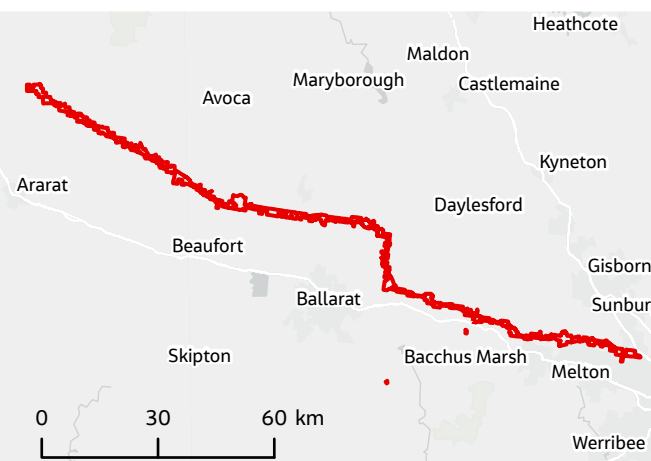
Kilometres

N


GDA2020 Vicgrid

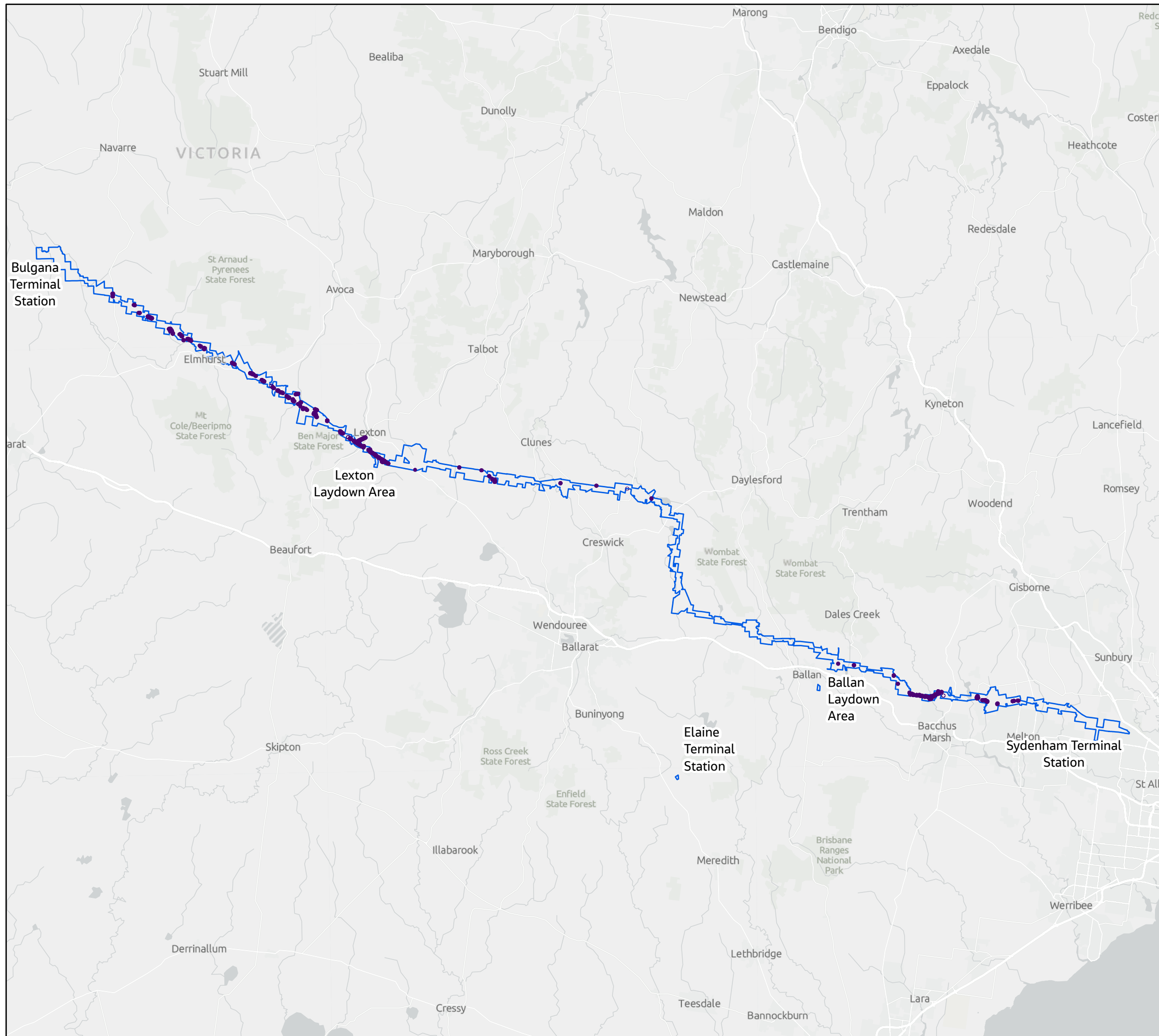
DATA SOURCES
 Jacobs, Sources: Esri, TomTom, Garmin, FAO, NOAA, USGS, © OpenStreetMap contributors, and the GIS User Community

COPYRIGHT: The concepts and information contained in this document are the copyright of Jacobs. Use or copying of the document in whole or in part without the written permission of Jacobs constitutes an infringement of copyright. Jacobs does not warrant that this document is definitive nor free of error and does not accept liability for any loss caused or arising from reliance upon information provided herein.

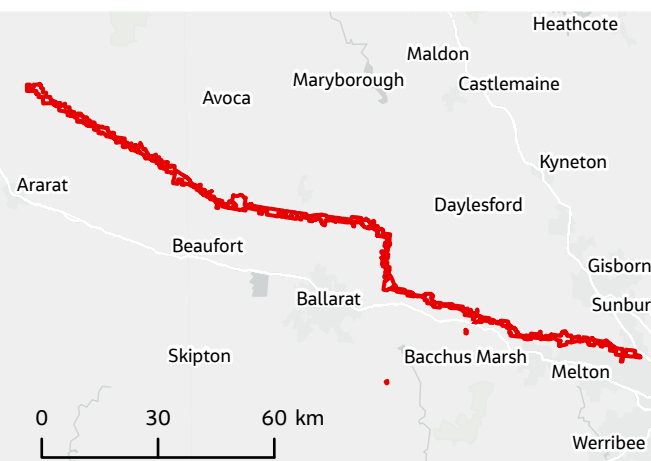


Appendix A.4
Impact to threatened fauna habitat
Painted Honeyeater
Western Renewables Link




-  Project Land
-  Impacted Painted Honeyeater modelled potential key habitat



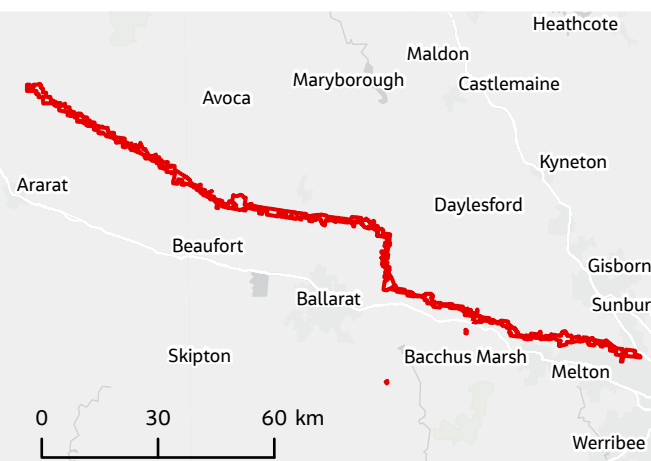
WRL_WR1454_Biodiversity_ImpactstoTSH_Fauna_combined_A3
Created 24 June 2025 by KarimiH
IS311802
0 10 20
Kilometres
N
GDA2020 Vicgrid
DATA SOURCES
Jacobs, Sources: Esri, TomTom, Garmin, FAO, NOAA, USGS, © OpenStreetMap contributors, and the GIS User Community
COPYRIGHT: The concepts and information contained in this document are the copyright of Jacobs. Use or copying of the document in whole or in part without the written permission of Jacobs constitutes an infringement of copyright. Jacobs does not warrant that this document is definitive nor free of error and does not accept liability for any loss caused or arising from reliance upon information provided herein.



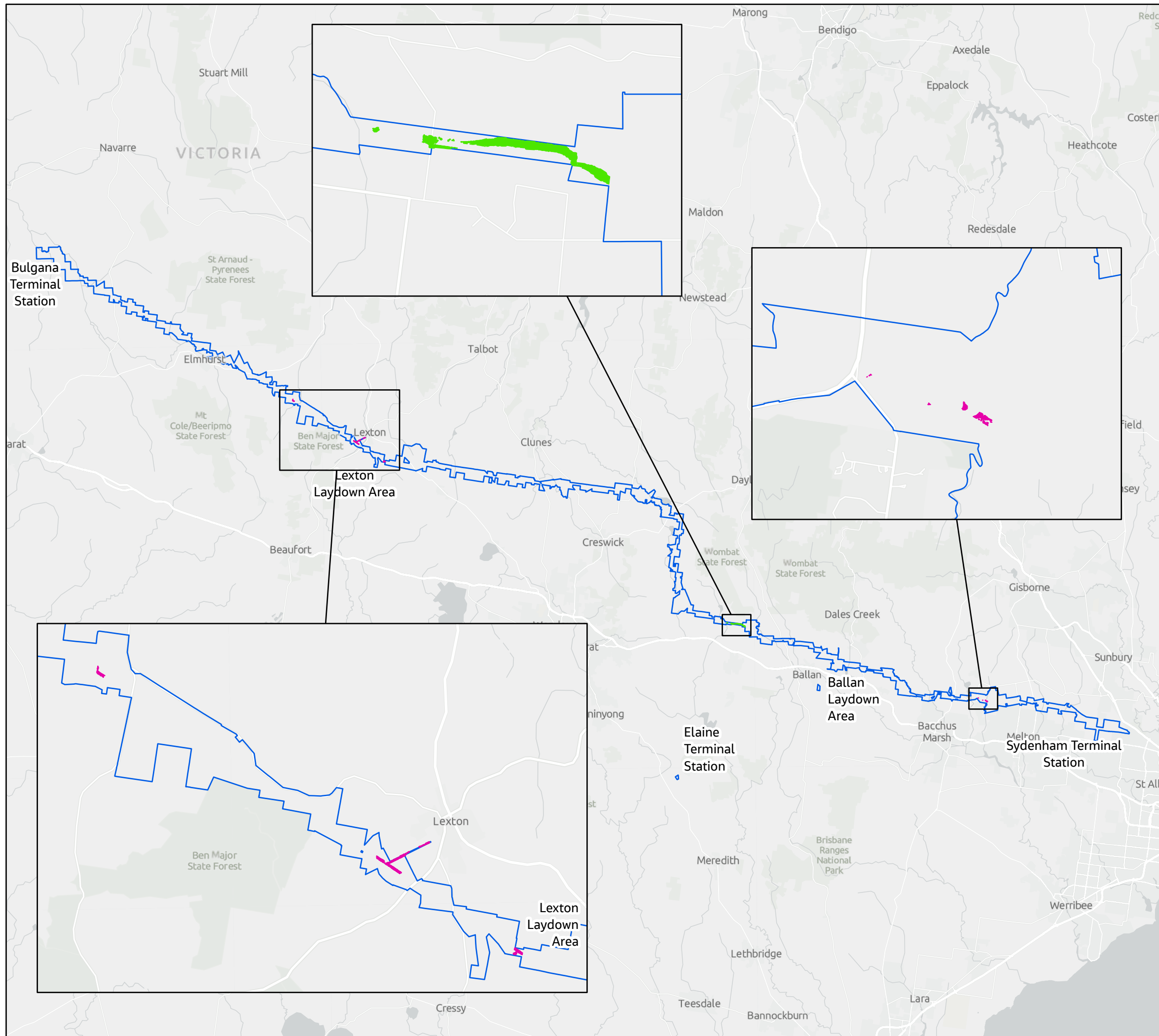
Appendix A.4
Impact to threatened fauna habitat
Platypus
Western Renewables Link

-  Project Land
- Impacted Platypus habitat**
 -  Confirmed habitat
 -  Desktop mapped potential habitat

WRL_WR1454_Biodiversity_ImpactstoTSH_Fauna_combined_A3
Created 24 June 2025 by KarimiH
IS311802
0 10 20
Kilometres
N
GDA2020 Vicgrid
DATA SOURCES
Jacobs, Sources: Esri, TomTom, Garmin, FAO, NOAA, USGS, © OpenStreetMap contributors, and the GIS User Community
COPYRIGHT: The concepts and information contained in this document are the copyright of Jacobs. Use or copying of the document in whole or in part without the written permission of Jacobs constitutes an infringement of copyright. Jacobs does not warrant that this document is definitive nor free of error and does not accept liability for any loss caused or arising from reliance upon information provided herein.



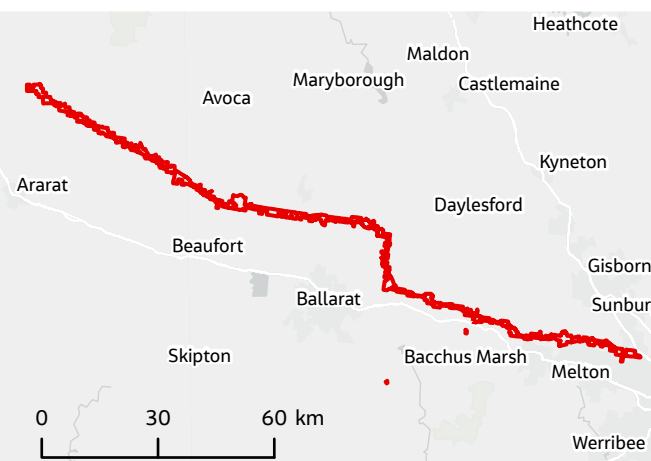
Appendix A.4
Impact to threatened fauna habitat
Powerful Owl
Western Renewables Link





- Project Land
- Impacted Powerful Owl habitat
 - Confirmed habitat
 - Field mapped potential habitat

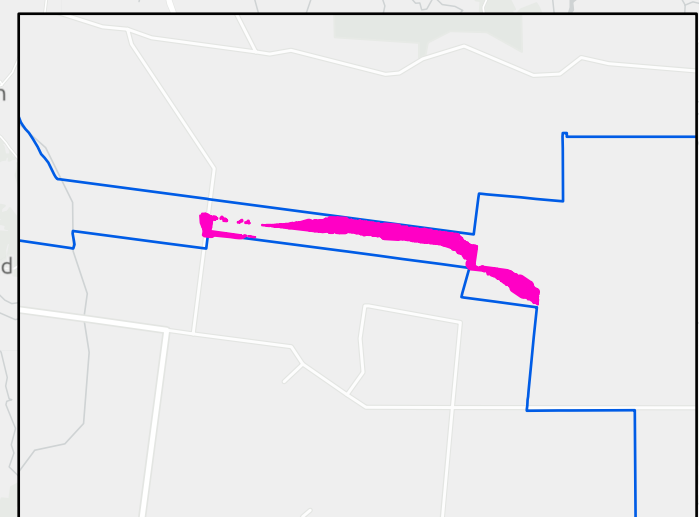
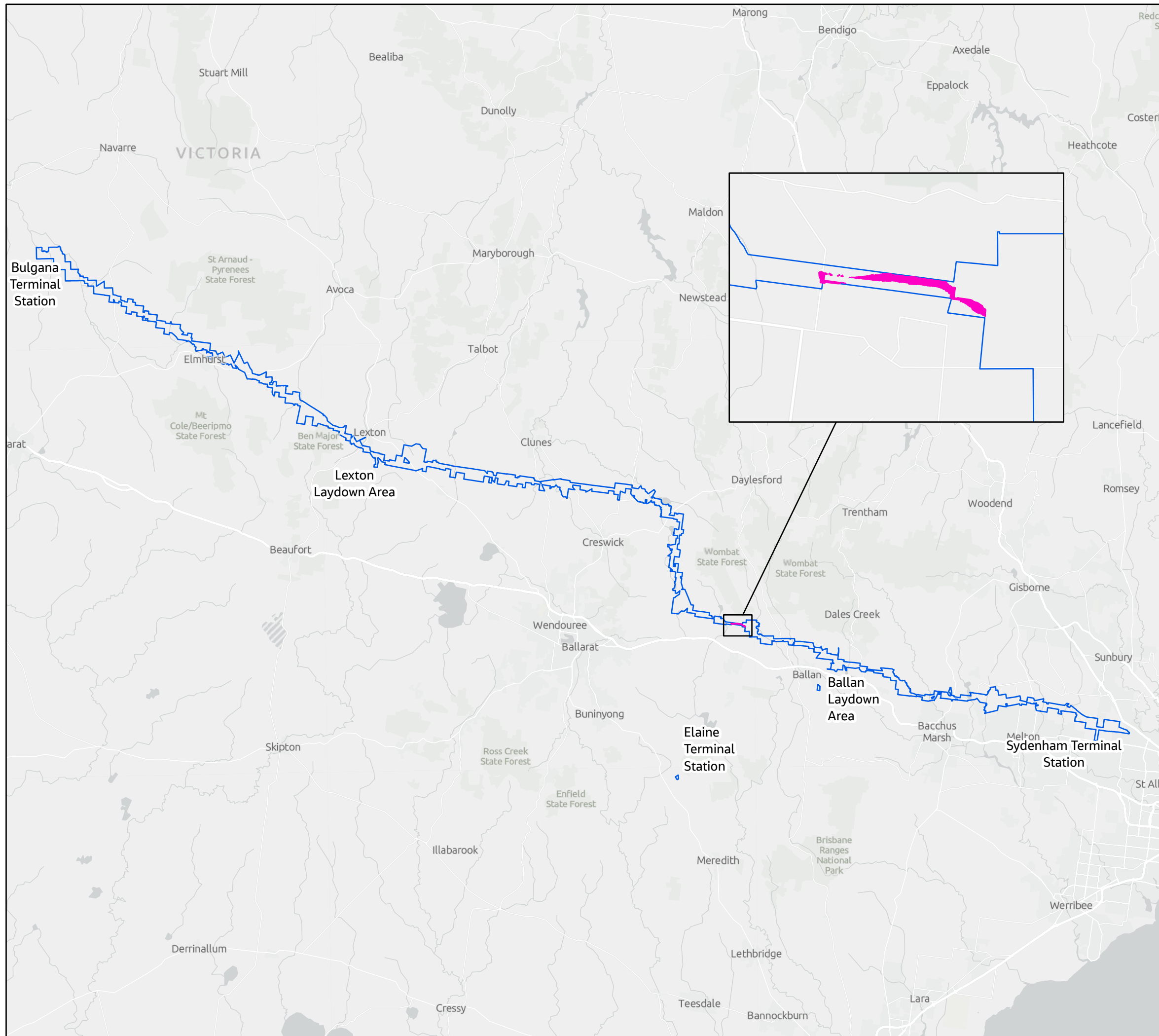
WRL_WR1454_Biodiversity_ImpactstoTSH_Fauna_combined_A3
Created 24 June 2025 by KarimiH
IS311802
0 10 20
Kilometres
N
GDA2020 Vicgrid

DATA SOURCES
Jacobs, Sources: Esri, TomTom, Garmin, FAO, NOAA, USGS, © OpenStreetMap contributors, and the GIS User Community
COPYRIGHT: The concepts and information contained in this document are the copyright of Jacobs. Use or copying of the document in whole or in part without the written permission of Jacobs constitutes an infringement of copyright. Jacobs does not warrant that this document is definitive nor free of error and does not accept liability for any loss caused or arising from reliance upon information provided herein.



Appendix A.4
Impact to threatened fauna habitat
Southern Greater Glider
Western Renewables Link

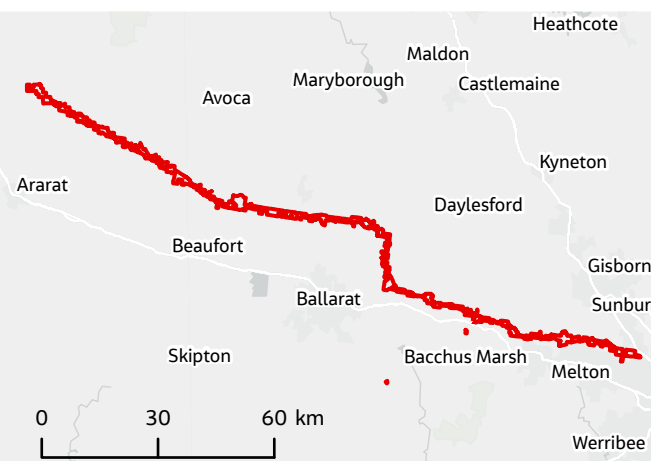
-  Project Land
-  Impacted Southern Greater Glider field mapped potential habitat





WRL_WR1454_Biodiversity_ImpactstoTSH_Fauna_combined_A3
Created 24 June 2025 by KarimiH
IS311802
0 10 20
Kilometres
N
GDA2020 Vicgrid

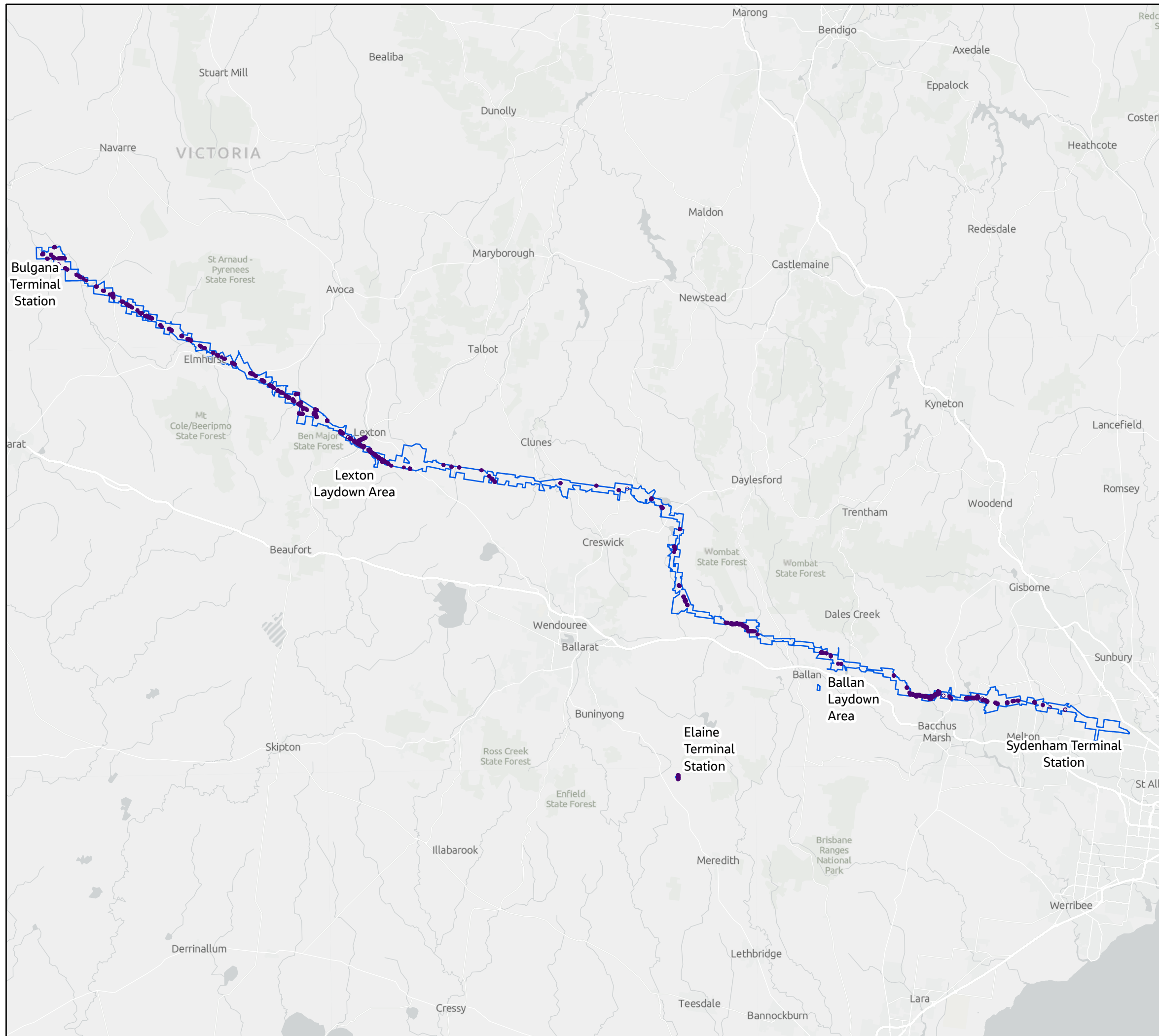
DATA SOURCES
Jacobs, Sources: Esri, TomTom, Garmin, FAO, NOAA, USGS, © OpenStreetMap contributors, and the GIS User Community

COPYRIGHT: The concepts and information contained in this document are the copyright of Jacobs. Use or copying of the document in whole or in part without the written permission of Jacobs constitutes an infringement of copyright. Jacobs does not warrant that this document is definitive nor free of error and does not accept liability for any loss caused or arising from reliance upon information provided herein.

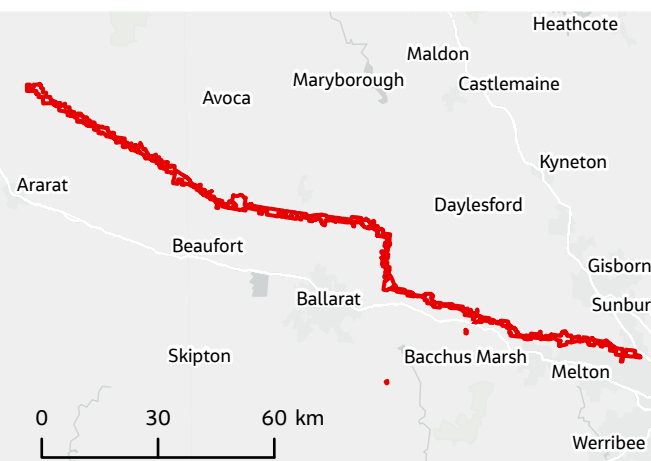


Appendix A.4
Impact to threatened fauna habitat
Square-tailed Kite
Western Renewables Link

-  Project Land
-  Impacted Square-tailed Kite modelled potential key habitat



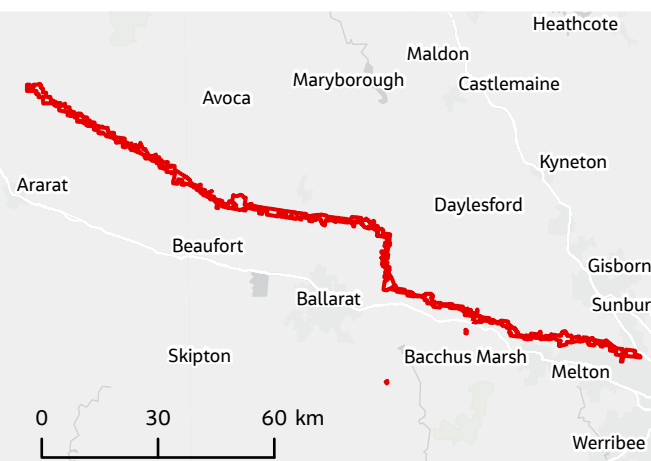
WRL_WR1454_Biodiversity_ImpactstoTSH_Fauna_combined_A3
Created 24 June 2025 by KarimiH
IS311802
0 10 20
Kilometres
N
GDA2020 Vicgrid
DATA SOURCES
Jacobs, Sources: Esri, TomTom, Garmin, FAO, NOAA, USGS, © OpenStreetMap contributors, and the GIS User Community
COPYRIGHT: The concepts and information contained in this document are the copyright of Jacobs. Use or copying of the document in whole or in part without the written permission of Jacobs constitutes an infringement of copyright. Jacobs does not warrant that this document is definitive nor free of error and does not accept liability for any loss caused or arising from reliance upon information provided herein.



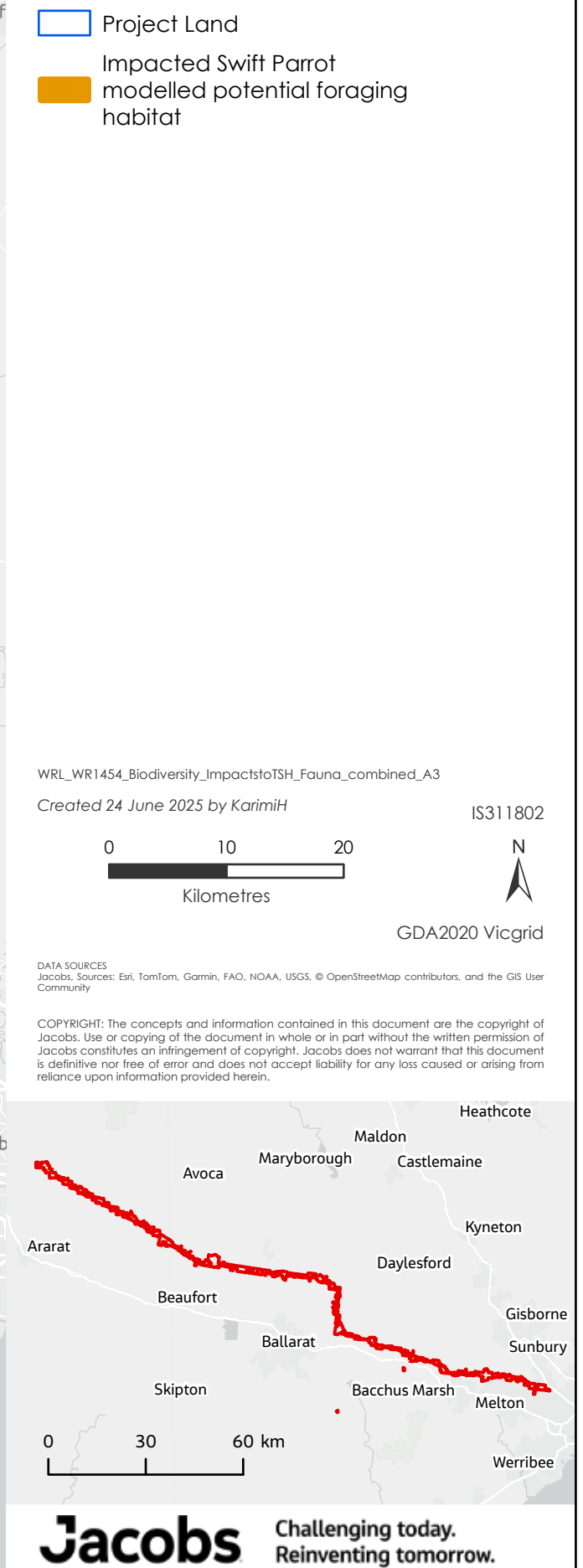
Appendix A.4
Impact to threatened fauna habitat
Striped Legless Lizard
Western Renewables Link

-  Project Land
-  Impacted Striped Legless Lizard field mapped potential habitat

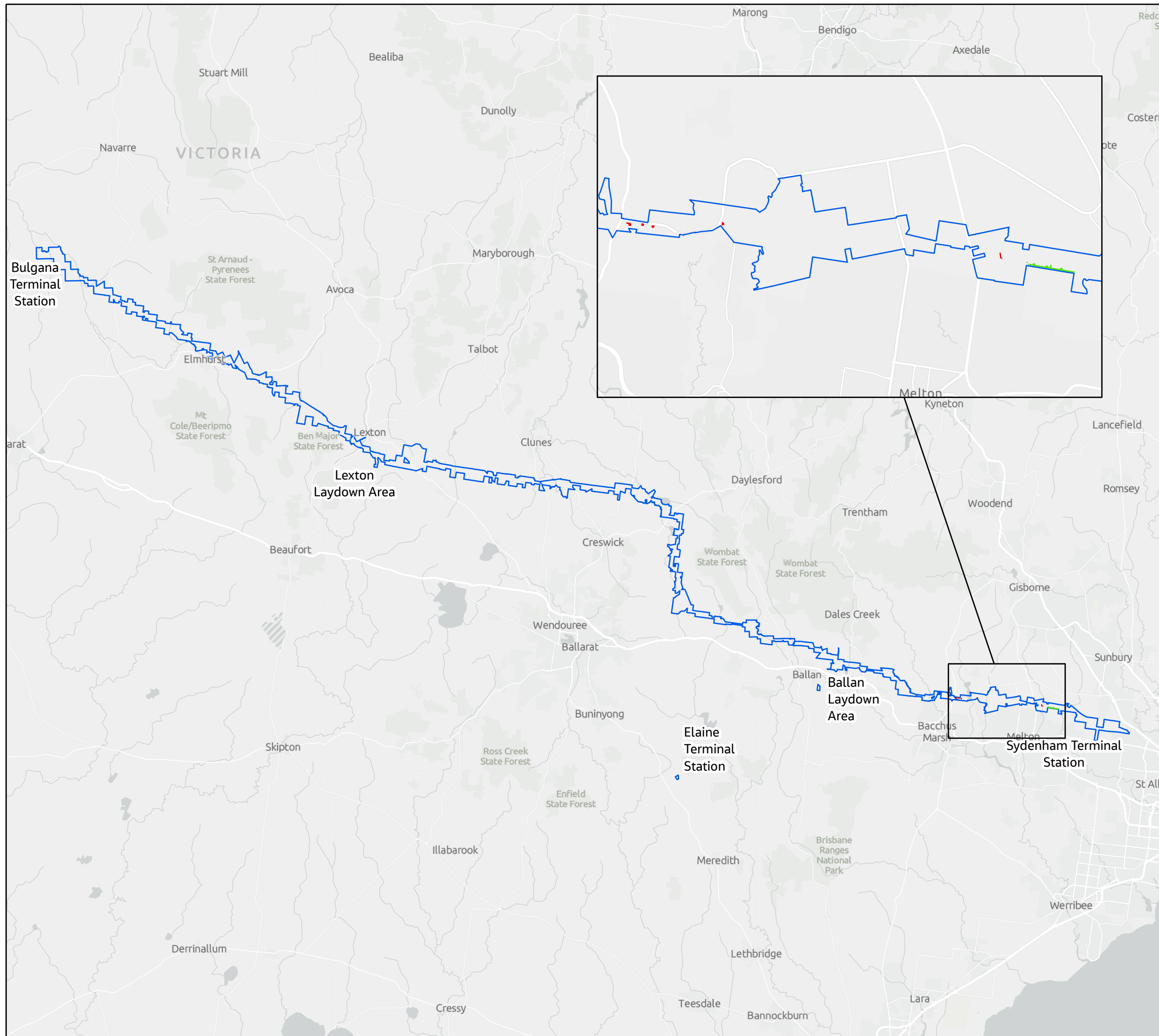
WRL_WR1454_Biodiversity_ImpactstoTSH_Fauna_combined_A3
Created 24 June 2025 by KarimiH
IS311802
0 10 20
Kilometres
N
GDA2020 Vicgrid
DATA SOURCES
Jacobs, Sources: Esri, TomTom, Garmin, FAO, NOAA, USGS, © OpenStreetMap contributors, and the GIS User Community
COPYRIGHT: The concepts and information contained in this document are the copyright of Jacobs. Use or copying of the document in whole or in part without the written permission of Jacobs constitutes an infringement of copyright. Jacobs does not warrant that this document is definitive nor free of error and does not accept liability for any loss caused or arising from reliance upon information provided herein.



Western Renewables Link



Appendix A.4
Impact to threatened fauna habitat
Tussock Skink
Western Renewables Link



- Project Land
- Impacted Tussock Skink habitat**
 - Confirmed habitat
 - Desktop mapped potential habitat

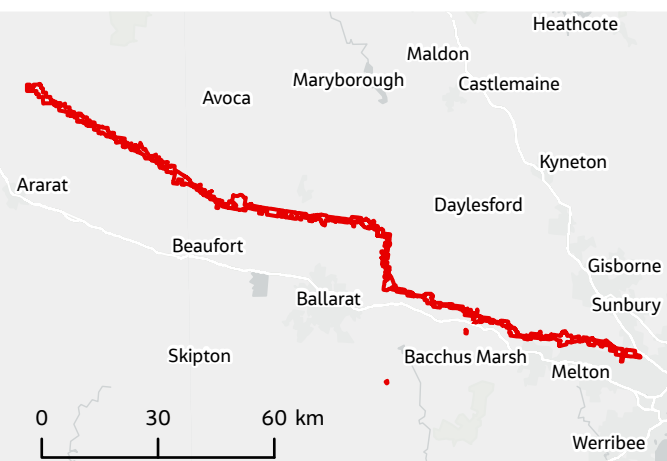
WRL_WR1454_Biodiversity_ImpactstoTSH_Fauna_combined_A3
Created 24 June 2025 by KarimiH

0 10 20
Kilometres

IS311802
N
GDA2020 Vicgrid

DATA SOURCES
Jacobs, Sources: Esri, TomTom, Garmin, FAO, NOAA, USGS, © OpenStreetMap contributors, and the GIS User Community

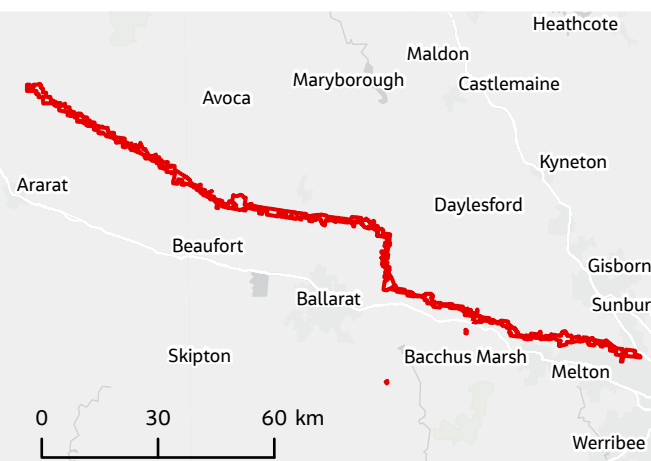
COPYRIGHT: The concepts and information contained in this document are the copyright of Jacobs. Use or copying of the document in whole or in part without the written permission of Jacobs constitutes an infringement of copyright. Jacobs does not warrant that this document is definitive nor free of error and does not accept liability for any loss caused or arising from reliance upon information provided herein.



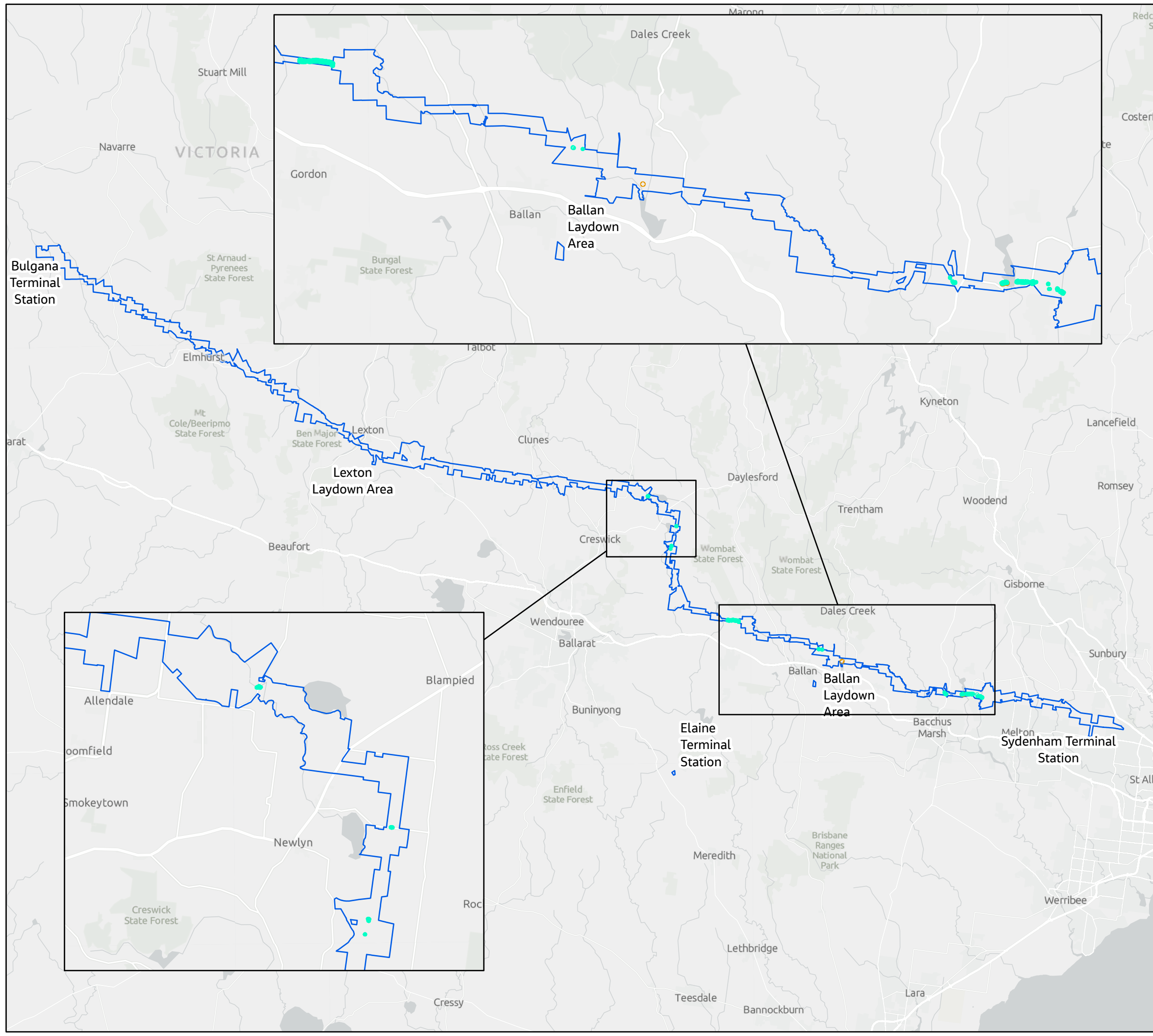
Appendix A.4
Impact to threatened fauna habitat
Western Burrowing Crayfish
Western Renewables Link

-  Project Land
-  Impacted Western Burrowing Crayfish confirmed habitat

WRL_WR1454_Biodiversity_ImpactstoTSH_Fauna_combined_A3
Created 24 June 2025 by KarimiH
IS311802
0 10 20
Kilometres
N
GDA2020 Vicgrid
DATA SOURCES
Jacobs, Sources: Esri, TomTom, Garmin, FAO, NOAA, USGS, © OpenStreetMap contributors, and the GIS User Community
COPYRIGHT: The concepts and information contained in this document are the copyright of Jacobs. Use or copying of the document in whole or in part without the written permission of Jacobs constitutes an infringement of copyright. Jacobs does not warrant that this document is definitive nor free of error and does not accept liability for any loss caused or arising from reliance upon information provided herein.



Appendix A.4
Impact to threatened fauna habitat
White-bellied Sea-Eagle
Western Renewables Link



- Project Land
- Impacted White-bellied Sea-Eagle modelled habitat
 - Potential breeding habitat
 - Potential foraging habitat

WRL_WR1454_Biodiversity_ImpactstoTSH_Fauna_combined_A3
Created 24 June 2025 by KarimiH
IS311802
0 10 20
Kilometres
N
GDA2020 Vicgrid

DATA SOURCES
Jacobs, Sources: Esri, TomTom, Garmin, FAO, NOAA, USGS, © OpenStreetMap contributors, and the GIS User Community

COPYRIGHT: The concepts and information contained in this document are the copyright of Jacobs. Use or copying of the document in whole or in part without the written permission of Jacobs constitutes an infringement of copyright. Jacobs does not warrant that this document is definitive nor free of error and does not accept liability for any loss caused or arising from reliance upon information provided herein.

